

Cape Paterson Locality

Site #10 on the Strzelecki Taxonomy Map

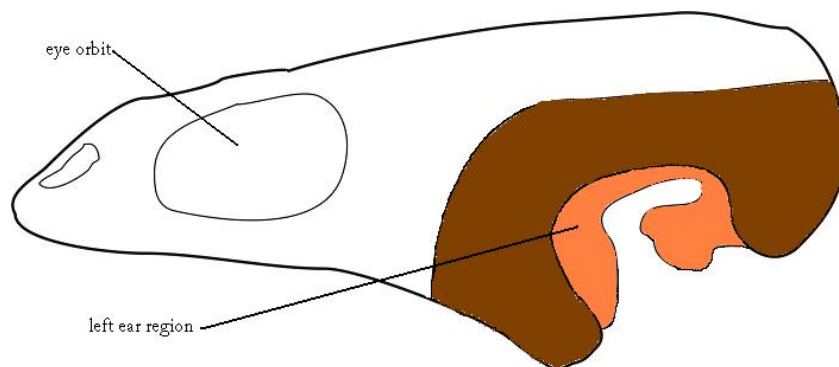
Cape Paterson is approximately 10 kilometres south of the township of Wonthaggi and is a very popular surfing and fishing village. It is also the western end of the Bunurong Coastal Drive, which hugs the coast from Cape Paterson to Inverloch and encompasses the Bunurong Marine National Park and Coastal Reserves.

Although there is a large area of rocky, shore platform exposed, it is mostly barren sandstone with very little conglomerate. Geologically speaking this area is quite interesting as you can see a volcanic plug close to the boat ramp, a reminder of volcanic activity in the Late Cretaceous.

Only a couple of bones have been found at Cape Paterson. The best specimen by far is a partial turtle skull found by Mike Cleeland in 2006. This specimen caused great excitement after it was prepared, as it was the first evidence that the turtles that lived in the Victorian Early Cretaceous had fully roofed skulls, unlike modern turtles whose skulls are very much reduced.



Image of Cape Paterson. Photographer: Lesley Kool.



Sketch of a turtle skull, showing the area preserved in the turtle skull fragment found by Mike Cleeland at Cape Paterson in 2006.